

# George Sage Memorial Annex

125 feet 9 inches long

42 feet 4 inches wide.

**1956  
GMC  
PD 4104**  
Trailways

**1949  
GM**  
Peter Pan

**1954  
Wayne**  
Chevrolet  
school bus

**1940  
White**  
Red & Tan



**1934  
Yellow**  
Blue Bird

**1947  
Flxible**  
Capitol Bus

**1947  
GM**  
Michaud

**1952  
GM  
PD 4103**  
Greyhound

**1964  
GMC  
PD 4106**  
Trailways

**36**  
Chevrolet

shelving

**1945  
Aerocoach  
Barans**

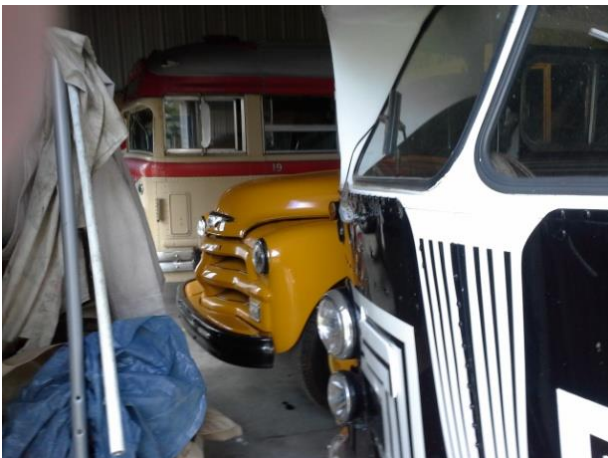


**1952  
Beaver**

**TOOL ROOM**

**PIT**

Bathroom





## **Outside @ George Sage Memorial Annex**

1971 GM T8H 5305	Golden Gate
1974 MCI MC8 30810-S11050	Peter Pan
1975 GMC Fishbowl T6H 4523A	CAT #711
1975 GMC Fishbowl T6H 4523A	Altoona PARTS BUS
1977 GMC RTS TH8201	Long Beach #4701
1977 MC-5C	Bellair Baker Shuttle
1984 MCI MC9 ER004424	Bonanza Bus (No tag axle)
1986 GMC	Santa Monica Municipal
1987 MCI 9B	Trans Bridge
1991 Orion	Amtran
1991 Prevost	Passaic Valley



## **Buses at other locations:**

1946 Ford Peninsula (Paint Shop)  
 1947 GM A.B.& W. Transit (Ed Wolf's garage)  
 1951 Brill (Paint Shop)  
 1953 Flxible Twin Coach  
 1954 Flxible Visicoach Harran Bus Company (Museum front lawn)  
 1970 GM Colonial Williamsburg (Ed Wolf's garage)  
 1970 Flxible #699 (Movie Shoot)